

BEE POND AVENUE (PLAT)
COUNTY ROAD 87

FIR 1/2"
#2512

S 89 D 50 00" E (R) 2533.04' (M)

4X4' FC
NE COR
SECTION

FOP 1"

DESOTO BOULEVARD (FIELD)
BRICK ROAD

2670.64' (M)

N 01 D 19 49" W (BR.)

24'-1 1/2"
33'-0"

50'-0"

EOP

100' ROW (ASPHALT ROAD)
STATE ROAD 595 (PLAT)
US ALTERNATE 19 (FIELD)

A - AZEALIA

BC - BALD CYPRESS

CD - S. RED CEDAR

CP - CHICKASAW PLUM

J - JASMINE

LO - LIVE OAK

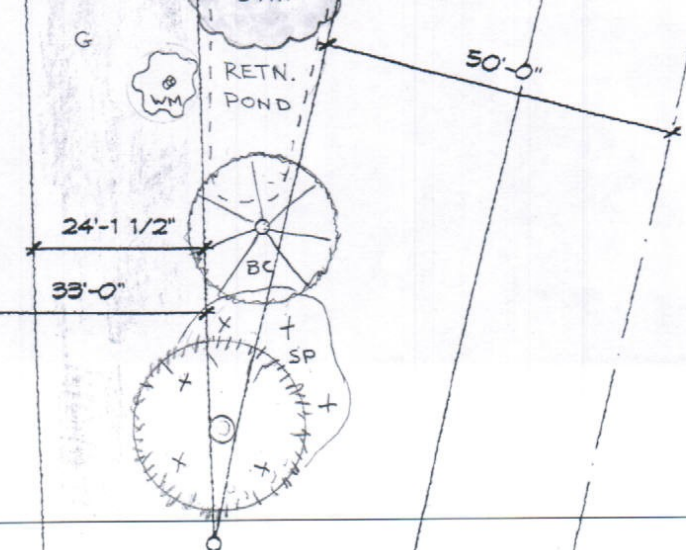
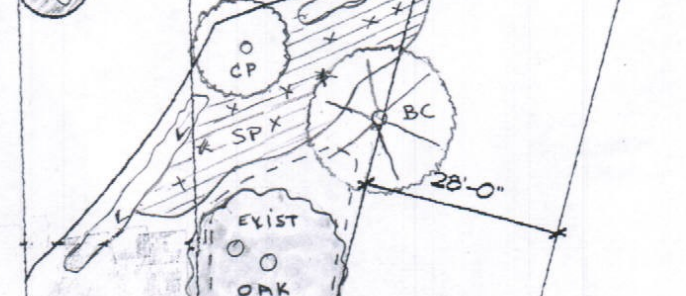
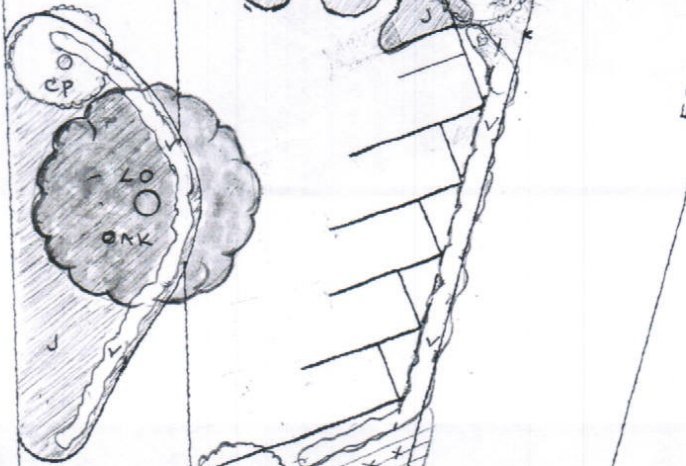
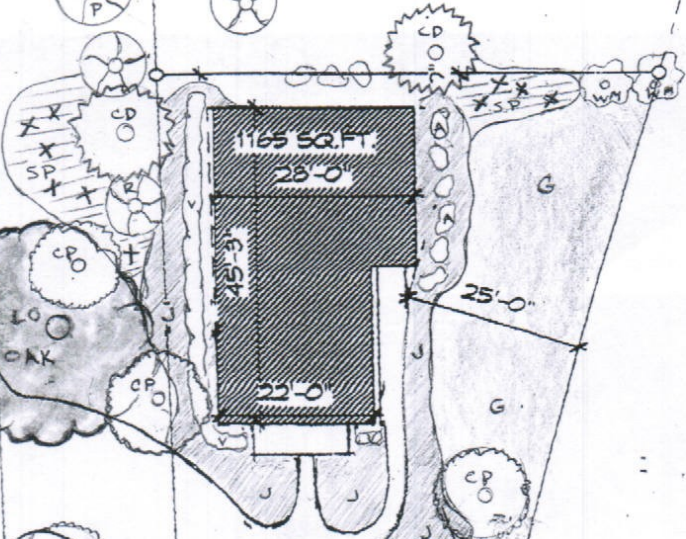
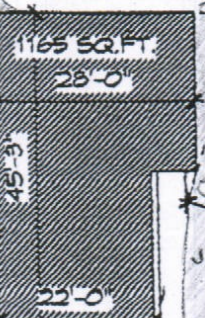
SP - SAW PALMETTO

P - PALM

V - VIBURNUM

WM - WAX MYRTLE

G - GRASS



SITE PLAN

Scale: 1" = 20' ft